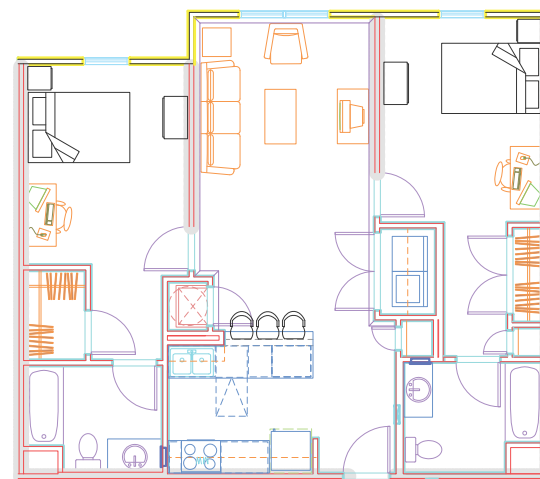
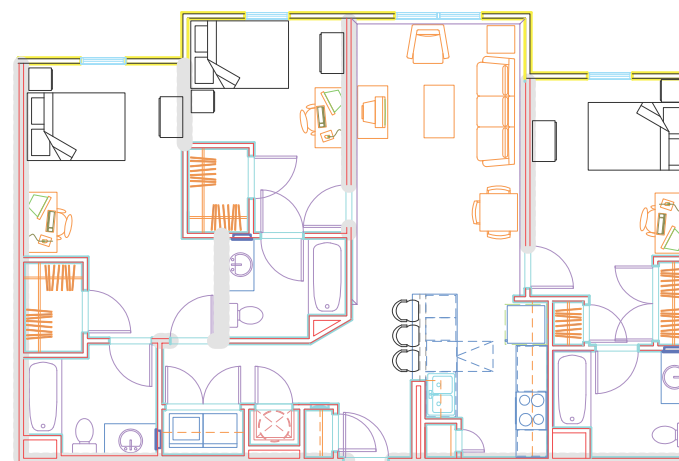


A1



B1



C1

Community Amenities

- Clubhouse and Recreation Facilities
- Fitness Center with State-of-the-Art Equipment
- Courtyard w/ Pool, Fountain & Gazebo
- Garage Parking (Spaces Limited)
- On-Site Professional Management Team
- 24-hour Emergency Maintenance
- Roommate Matching Service
- Recycling Center
- Shuttle Service-CLIFF
- EarthCraft™ Certified Sustainable Design

Unit Amenities

- 1, 2 and 3 Bedroom Units
- Individual Bedrooms with Private Baths
- Fully Furnished Apartments
- High Speed Internet Access
- Full-Size Kitchen Appliances
- Full-Size Washer and Dryer
- Oversize Closets
- Electronic Controlled Access

Smart.Everything.

- Smart.Service. online service requests
- Smart.Click. pay your rent and manage your account online
- Smart.Text. get phone texts for emergency notifications, upcoming events, and special incentives
- Smart.Video. personalized Flip video tours

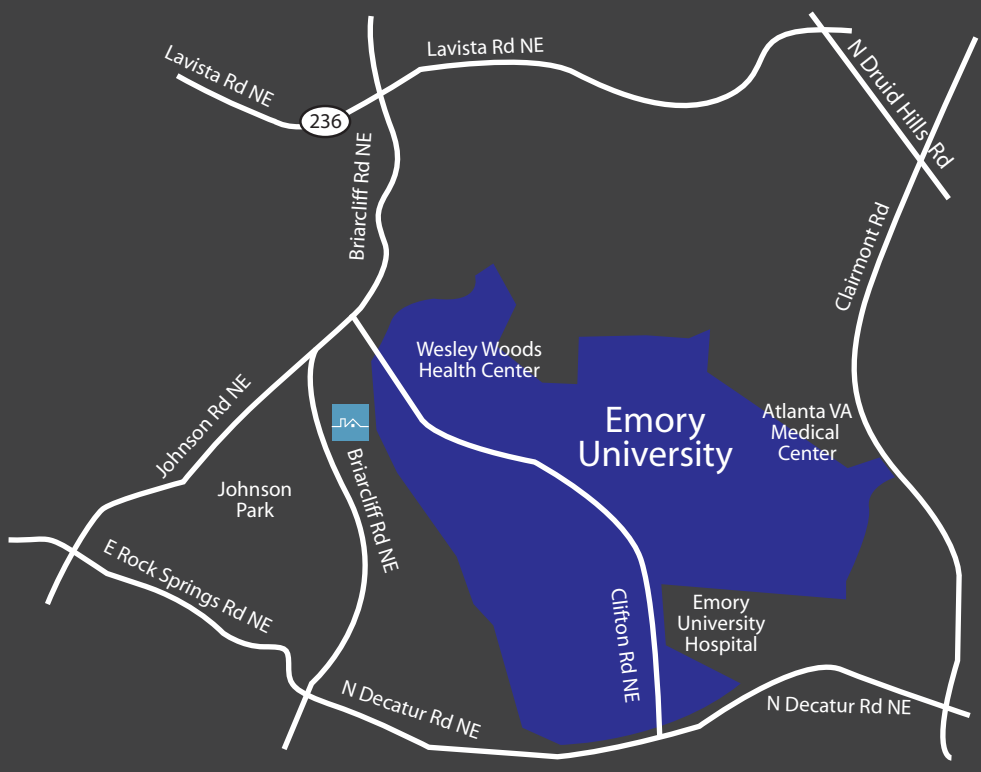
Smart.Living.

Smart.Living.

Campus Crossings at Briarcliff provides an exciting new housing opportunity for Graduate Students at Emory University to live in an affordable and private community designed specifically with your needs in mind.

With state-of-the-art amenities and a unique mix of comfortable and spacious floor plans along with a sustainable EarthCraft™ designation, Campus Crossings at Briarcliff is an extraordinary new addition for Emory University graduate and professional students.





Smart.Location.

Smart. Location.



STUDENT LIVING
REDEFINED